

# LOVE NORTH

---

*A Guide to New Zealand's North Island*

---





## DRIVING DISTANCES FROM AUCKLAND

To Hamilton	1.5 hours	126km
To The Coromandel	2.2 hours	168km
To Tauranga	2.5 hours	200km
To Bay of Islands	3 hours	228km
To Rotorua	3 hours	230km
To Ruapehu	4.2 hours	342km
To Napier	5 hours	413km
To Gisborne	6 hours	474km

## NORTH ISLAND

**According to Māori mythology, the North and South Islands of New Zealand arose through the actions of the demigod Māui.**

Māui and his brothers were fishing from their canoe (the South Island) when he caught a great fish and pulled it from the sea. While he was not looking his brothers fought over the fish. This great fish became the North Island and thus the Māori name for the North Island is Te Ika-a Māui (The Fish of Māui).

The mountains and valleys are believed to have been formed as a result of Māui's brothers' fighting over the fish. Until the early 20th Century, an alternative Māori name for the North Island was Aotearoa. In present Māori usage, Aotearoa is a collective name for New Zealand as a whole.

## NATURAL & CULTURAL REGIONS

**The North Island combines natural beauty with city style in a mild climate; perfect whether you're seeking a beach holiday, an authentic cultural experience or retail therapy.**

The North Island is the gateway to New Zealand for many international visitors. The swirling seas form an eerie backdrop to Maori legend; this is an island where abundance knows no bounds.

Highlights range from amazing natural landscapes to captivating culture. The central North Island features astounding thermal activity, from geysers to mud pools and hot springs. In the Waitomo district, cave networks provide opportunities for adventure. Delve further into legend with an exploration of Maori culture – it is easily accessible to any visitor. Rotorua is a particular highlight for those interested in learning about the Maori people.

No visit to the North Island would be complete without setting foot in the native forests that drape the hills. Sample the bounty of rivers and lakes by fishing for trout. Offshore, swim with dolphins or explore underwater life on a diving expedition. The North Island is blessed with a huge variety of beaches, from golden bays to wild surfing breaks. Great places to enjoy New Zealand's maritime treasures include the subtropical setting of the Bay of Islands and Auckland, the 'City of Sails'.

This guide embraces the diversity of natural and cultural features of the North Island that visitors find simply astonishing.

# AUCKLAND INTERNATIONAL AIRPORT

The New Zealand journey begins at Auckland Airport, the country's main gateway. As the first to greet visitors to our country and the last to see them off; we are your visitors' first impression! Services and facilities at Auckland Airport allow us to make their experience with us both pleasant and convenient. We offer luggage storage, wrapping, visitor information and assistance among many other services all created to take the hassle out of travel.



## A full service International Airport

Our airport hospitality ambassadors, otherwise known as 'bluecoats' for their distinctive coloured jackets, are on hand to offer passengers help when at the airport. The airport now feature Chinese-speaking hospitality Ambassadors.

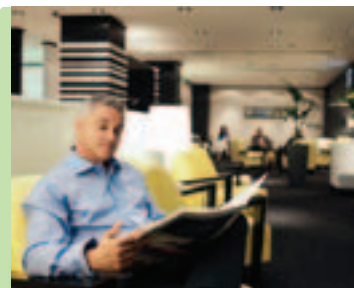


## State of the art technology

Wireless hotspots in the international terminals keep our passengers connected.

## Best of duty free shopping

The shops, situated inside the terminal, are open 24h for all incoming and outgoing flights.



## More than an airport, a comfortable travel experience

If you are flying internationally from Auckland Airport, you can now enjoy the comforts of a premium traveller's lounge. Take a break or catch up on work in the Emperor Lounge – a contemporary New Zealand-designed space and enjoy outstanding service from our warm welcoming staff.



# NORTHLAND & BAY OF ISLANDS

With giant kauri trees, lush native forest, countless golden beaches and secluded offshore islands, subtropical Northland is both a paradise for nature lovers and an aquatic playground. The area is rich in vibrant Maori culture and European heritage. To discover New Zealand's history you need to visit Northland and the Bay of Islands first.



## Ancient Trees of Waipoua Forest

At The Kauri Museum, learn the fascinating story of the mighty kauri tree and the history of how these giant trees supported NZ's early settlers. Leaving from the Copthorne Hotel Hokianga, the Footprints Waipoua tour goes deep into the forest where local Maori guides share stories of the forest and its gods.



## Dolphins & Dunes

Discover the Bay of Islands and the famous Hole in the Rock with Explore NZ. See dolphins in their natural habitat as you cruise through the 144 islands of the Bay. Take the Dune Rider full day tour to spiritual Cape Reinga at the top of NZ where two oceans meet. Drive along Ninety Mile Beach, sand board down massive dunes, see ancient buried kauri forests.



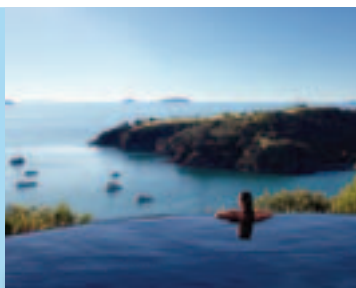
## Historic Waitangi

The Treaty of Waitangi between the Maori chiefs and the British Crown was signed at Waitangi in 1840. See the Treaty House, Maori meeting house and ceremonial war canoe. Learn the ancient customs, rituals and traditions of the Ngapuhi, NZ's largest Maori tribal group, as you float along the Waitangi River to the sacred waterfalls on a Maori war canoe with Taiamai Tours.



# AUCKLAND

Kia ora and welcome to Auckland, Tāmaki Makaurau – the maiden desired by a hundred lovers. It's a place where big city style goes hand in hand with a stunning natural playground. Breath-taking scenery, world-class food and wine, sparkling harbours, island retreats, eclectic cultures, great shopping and spectacular arts and events – it's all here for you to discover.



## **Waiheke Island – the Island of wine**

The jewel of the Hauraki Gulf, Waiheke is a haven of beautiful vineyards, olive groves, farm land and beaches – all just a 35- minute ferry ride from downtown Auckland. Waiheke is known as “the island of wine” for its 30 vineyards and wineries boasting internationally award-winning wines.



## **America's Cup sailing experience**

The America's Cup is the world's oldest and most prestigious sporting trophy and ultimate yachting regatta. Explore NZ offer visitors the unique opportunity to participate in sailing on these grand prix racing machines. This is a once in a lifetime experience that requires no previous sailing experience.



## **Devonport – a charming seaside village**

Devonport is a picturesque seaside village only minutes away from downtown Auckland and is blessed with boundless natural beauty, from the twin volcanic cones of Mount Victoria and North Head, offering some of the most spectacular views in Auckland, to its superb, safe white sand beaches.



# HAMILTON & WAIKATO REGION

Directly to the south of Auckland the diverse Hamilton & Waikato region is well-known for its nature-based tourism, underground wonders and Middle-earth movie magic. From the stunning black sand surf beaches of Raglan and subterranean caverns to Hamilton's vibrant café scene and the green rolling hills that shape the landscape, there is something for every traveller.



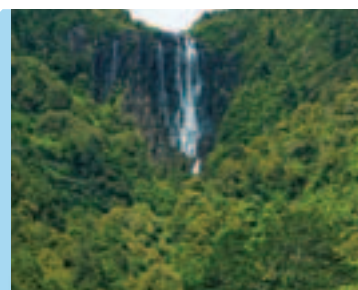
## Glowworms & underground adventure – Waitomo Caves

Waitomo Caves An hour south of Hamilton the mystical world of Waitomo awaits. Millions of years in the making, Waitomo is a must-see destination as the caves are filled with beautiful limestone rock formations and awe-inspiring galaxies of glowworms. The more adventurous can also try their hand at black water rafting or abseiling.



## Middle Earth Movie Magic – Hobbiton Movie Set

When scouting for settings for his epic movie adaptation of The Lord of the Rings, New Zealand director Peter Jackson found just what he was looking for in the green paddocks of the Hamilton & Waikato region. Guided tours of the set take visitors through the 12-acre 'Shire' which is the picturesque home of the hobbits.

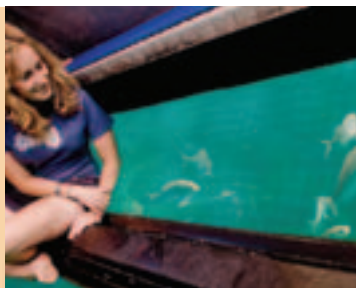


## Nature & Wildlife

Blessed with lush pastures and ancient bush-clad mountain ranges the Hamilton & Waikato region is known for its nature-based attractions. Visitors can walk among trees that have been growing for hundreds of years at Sanctuary Mountain, a vast sanctuary for native plants and rare birds, or stroll through the Hamilton Gardens' visually stunning 58 hectares.

# THE COROMANDEL

Renowned worldwide for its natural beauty - misty rainforests and pristine golden beaches, The Coromandel is blessed with hundreds of natural hideaways, making it an ideal place to slow down, relax and unwind.



## Cathedral Cove

Accessible only on foot, boat or kayak, Cathedral Cove is one of the "must visit" sites on The Coromandel. Visitors can explore the beauty of this region with a Glass Bottom Boat operator, showcasing the wonders beneath the sea.



## Hot Water Beach

5-minutes from Cathedral Cove lies another truly unique Kiwi experience, Hot Water Beach. An underground river of hot water flows from the interior of the earth to surface in the Pacific Ocean at Hot Water Beach. Visitors flock to the usually deserted Hot Water Beach to find hot water bubbling through the golden sand.



## Food and wine experience along the Hauraki Rail Trail

The Hauraki Rail Trail, is a scenic cycle trail showcasing some of the best scenery New Zealand has to offer. Discover unique Food and wine experiences and remote accommodations, Ohinemuri Winery, Bistro at The Falls Retreat and spend the night at Manawa Ridge.



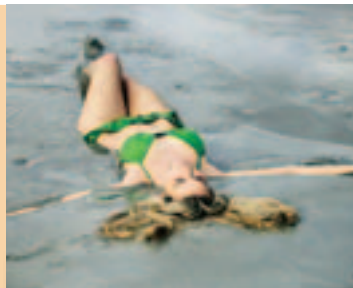


New Zealand's iconic tourism destination, Rotorua, is spiritual home to the Maori of Te Arawa. Experience the awesome forces of nature – bubbling mudpools, spouting geysers and hot water beaches. Rotorua is set amidst a myriad of crystal clear crater lakes and untouched New Zealand forest. Discover eight internationally recognised Power Spots, The world's highest commercially rafted waterfall and why people refer to it as the Spa of the South Seas.



### Adventure

The excitement capital of the north has adventures for all; whatever level you desire. From rafting in the highest rapids to the best mountain biking in the Southern Hemisphere; or Zorbing, rolling down a hill in a giant plastic orb, to the unique thrills of Agroventures, Rotorua delivers on the promise of adrenalin.



### Spa & Beauty

As the Spa of the Southern Seas, Rotorua has been greeting visitors since early 1900's; the unique minerals in the water are said to be a fountain of youth. Travelers have many choices for their spa experience, with Queen Elizabeth Medical Spa, Hell's Gate Mud Spa, Polynesian Spa with family and adult pools and Wai Ora Spa.



### Family

Kids love Rotorua... families love Rotorua... From riding the Luge at Skyline, to the feeding the animals at the Agrodome (...) watching live Kiwis at Rainbow Springs or catching your very first fish in one of the 18 nearby lakes.

# Romantic HONEYMOON

## DAY 1

### Arrive Auckland / Bay of Islands

Depart Auckland Airport and head to Bay of Islands. Enjoy a dolphin watching cruise to the Hole in the Rock or paddle a Maori canoe on the Waitangi River.

## DAY 2

### Bay of Islands / Auckland

Learn NZ's history at Waitangi Treaty Grounds, or take a coach trip to Cape Reinga via 90 Mile Beach.

## DAY 3

Back in Auckland, visit the Sky Tower, go shopping and enjoy a romantic dinner on a cruise.

## DAY 4

### Auckland / Tauranga

Depart Auckland and head to Tauranga – famous for its' white sand beach at Mount Maunganui. You can visit the Comvita Visitor Centre and Kiwi 360 or just relax. Don't forget to try the ice cream!

## DAY 5

### Tauranga / Rotorua

Treat yourself to a flight to White Island then head to Rotorua.

## DAY 6

### Rotorua

You can visit Kiwi birds and witness world famous geysers. A romantic lunch on Mt Ngongotaha. In the evening, indulge in a couples' spa treatment or play in the mud.

## DAY 7

### Rotorua / Hobbiton / Taupo

Depart Rotorua and visit Hobbiton in the Hamilton Waikato region en route to Taupo. Relax on a scenic cruise on Lake Taupo.

## DAY 8

### Taupo / Napier

Have a sleep in and then enjoy fishing for prawns and a prawn meal, then head to Napier, stay in one of the many luxury lodges. Join a private tour and be absorbed into the vibrant world of Hawke's Bay wine and award winning cuisine.

## DAY 9

### Napier / Auckland

Take it easy today and head back to Auckland for some shopping, then relax.

### Depart Auckland





# Hearty FAMILY

## DAY 1

### Arrive Auckland

Arrive in Auckland, go shopping and visit underwater world.

## DAY 2

### Auckland / The Coromandel

Depart Auckland and head to The Coromandel. Stroll on the white sand beach, visit Cathedral Cove and Hot Water Beach. Try some famous green-lipped mussels.

## DAY 3

### The Coromandel / Tauranga

Enjoy a ride on the Driving Creek Railways and participate in pottery making. Head to Tauranga in the afternoon and visit a bird park or Kiwi 360.

## DAY 4

### Tauranga / Waitomo / Matamata

Depart Tauranga and head to Waitomo Caves in the Hamilton Waikato region. Then depart to Matamata and experience a farm stay.

## DAY 5

### Matamata / Rotorua

Visit Hobbiton this morning, and then head to Rotorua. Enjoy a lunch on Mt Ngongotaha and a luge ride, followed by a visit to the Kiwi bird hatchery and The Big Splash.

## DAY 6

### Rotorua

Enjoy a farm tour and feed the animals, then roll down a hill in a giant globe... it's great fun!

## DAY 7

### Rotorua / Taupo / Ruapehu

Visit a geyser, do some shopping then head to Taupo. Have fun fishing for prawns, then cooking them. A jet boat ride is also a great option.

## DAY 8

### Ruapehu / Auckland

Have a walk up Mt Ruapehu. If it's ski season, you can enjoy the snow. Then head back to Auckland for some shopping, shopping, shopping...!

## DAY 9

### Depart Auckland



# Luxury HOLIDAY

## DAY 1

### Arrive Auckland / Bay of Islands

Depart Auckland and drive north to The Kauri Museum and on to Copthorne Hotel Hokianga. Enjoy a seafood dinner then join a guided night tour into the Waipoua Forest.

## DAY 2

### Bay of Islands

Head over to Bay of Islands for a cruise around the islands, exclusive fishing charter or a round of golf. Stay in a boutique lodge and enjoy fresh fish for dinner.

## DAY 3

### Bay of Islands / Auckland

See a cultural show at Waitangi Treaty Grounds or take a Maori canoe trip on the Waitangi River. Then head to Auckland (...)

## DAY 4

### Auckland / Hobbiton / Rotorua

Depart from Auckland and head to Hobbiton in the Hamilton Waikato region. Try their legendary Green Dragon menu for lunch, then head to Rotorua and enjoy a special dinner on Mt Ngongotaha. Stay in one of the several top lodges.

## DAY 5

### Rotorua

Spend the morning trout fishing with your guide then catch a scenic over Rotorua and its surrounds. At night, visit a geyser and enjoy a Maori cultural performance and hangi dinner. If time allows, take a late-night dip at a geothermal spa.

## DAY 6

### Rotorua / Gisborne

Have a nice sleep in, then head to Gisborne - the first city in the world to see the sun. You can choose to do a wine tour either on bike or by coach.

## DAY 7

### Gisborne / Napier

Depart Gisborne and head to Napier. Stay at the luxurious Cape Kidnappers, choose from a variety of spa options or challenge yourself on the spectacular golf course hailed as one of the great modern marvels in golf.

## DAY 8

### Napier / Auckland

Nice and easy drive back to Auckland for some shopping.

## DAY 9

### Depart Auckland





# Incentive GROUP

## DAY 1

### Arrive Auckland

Depart Auckland Airport, head to the wharf for a unique sailing experience, an America's Cup Race match. Celebrate your victory well into the night, in one of the many restaurants on Auckland's waterfront.

## DAY 2

### Auckland / Tauranga

Depart Auckland, head to Tauranga and visit the Comvita Visitor Centre and Kiwi 360 or take a trip to White Island.

## DAY 3

### Tauranga / Hobbiton / Rotorua

Depart Tauranga this morning, visit Hobbiton and the Green Dragon, then head to Rotorua for a Maori cultural performance and hangi dinner tonight.

## DAY 4

### Rotorua

Enjoy Team building activities with one of the many local operators, followed by a quick lunch and luge at Mt Ngongotaha before cruising to the hot pools on one of the 18 lakes. In the evening learn discover your inner warrior and learn the Haka for a truly life changing experience at Te Puia.

## DAY 5

### Rotorua / Taupo / Ruapehu

Depart from Rotorua and head to Taupo. Go jet boating and prawn fishing, then head to Ruapehu.

## DAY 6

### Ruapehu / Napier

Depart Ruapehu, then head to the Art Deco capital of New Zealand, Napier. Explore the city in a luxury vintage car with your local guide; take in some of the finest examples of 1930's architecture in the world.

## DAY 7

### Napier / Auckland

Head back to Auckland to relax and do some shopping.

## DAY 8

### Auckland

Take a ferry to Waiheke Island and try out their double zipline. Then enjoy a delicious lunch in one of their top wineries.

## DAY 9

### Depart Auckland



# BAY OF PLENTY

Located on the East coast of the North Island, the coastal Bay of Plenty is one of New Zealand's top holiday destinations for Kiwi's and international travellers alike. Boasting the sunniest region on the North Island, the Bay of Plenty is a great year round destination. Whether you're after adventure, beach lifestyle, or a bit of indulgence, the Bay of Plenty has it all.



## 'Mauao' Mount Maunganui

Known as Mount Maunganui, Mauoa is an extinct volcanic cone at the end of a peninsula. It is considered very important and tapu (sacred) by the local Māori iwi, featuring extensively in local mythology. Enjoy a walk around the base track or if you're feeling fit you may want to try the walk to the summit for great views of the coastal areas and outlying islands.



## White Island Tours

White Island is one of the world's most accessible active volcanoes. Situated 49km offshore, the island volcano constantly emits a cloud of steam and periodically erupts expelling volcanic ash several thousand metres into the atmosphere.



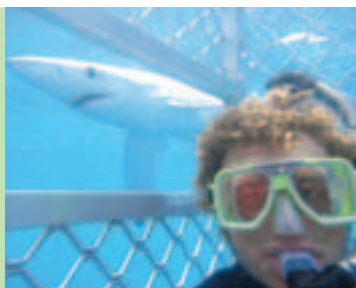
## Comvita Visitor Centre

Join a 60-minute guided tour exploring a world of natural life giving plants and the history of ancient Maori medicines. Enter into the wonderful world of honey bees. Discover how man, science and nature are working together to improve human wellness. Visitors can see, touch, taste and purchase Comvita's natural health and beauty products.



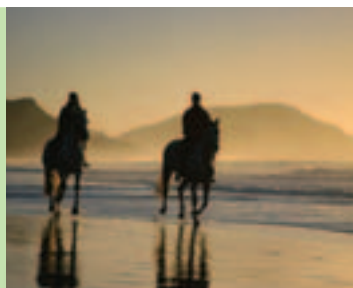
# EASTLAND

Throughout history this region has attracted those seeking to discover. It calls out to explorers from any country as the first place on earth to see the new sun, every day. This historic region is where the first Maori landed in Aotearoa and, hundreds of years later, Captain Cook first set foot on NZ soil.



## **Dive Tatapouri Feed the Stingrays and Shark Cage Diving**

Dive Tatapouri situated on the waterfront 10mins from Gisborne is the perfect place to unwind while soaking up the local culture, history and unique marine surroundings. Shark Cage Diving - Our design-built cage allows us to take you very close to the most feared animal in ocean. No experience needed.



## **Horse Treks: Beach or Bush experiences**

Eastland offers unique riding experiences for both experienced and novice riders. Live your dream and Ride along Gisborne's finest beaches, with Young Nick's Head as a back drop or experience New Zealand's native bush and wildlife with a farm and bush ride.



## **Wineries, Vineyards & Brewery**

Gisborne is one of New Zealand's largest grape growing regions with just over half its 2000 hectares of vineyards planted to Chardonnay. A Mediterranean climate and suitable soils are the key factors in the success of wine production in this region which regularly produces unique, full-flavoured, award winning wines.



# GREAT LAKE TAUPŌ

Created by the largest known volcanic eruption of the past 5,000 years – Lake Taupo is a fresh water lake the size of Singapore, popular for watersports and fishing. The region is well known for adrenalin and adventure activities, but is also a great place to relax and refresh while exploring the Central North Island.



## Lake Taupo and Tongariro National Park

An hour's drive from Taupo, lies the Tongariro National Park, a Dual World Heritage Park. There are the 3 volcanoes, Mt Ruapehu, the largest ski area in NZ, Mt Ngauruhoe made famous as 'Mt Doom' in the Lord of the Rings movies, and Mt Tongariro, home to the Tongariro Alpine Crossing; world top 10 track.



## HELiPRO Taupo

Helicopter tours offer scenic flights over some of the best of New Zealand's landscape. Powerful volcanoes, active thermal fields, tranquil wilderness areas, pristine lakes and rivers are all part of these extraordinary tours.



## Hilton Lake Taupo

Featuring magnificent views over the lake and mountains, Hilton Lake Taupo is the only 5-star international hotel in the Central North Island. The hotel offers a wide range of room types and a total of 113 rooms. Facilities include tennis courts, thermally heated swimming pool and plunge pool, sauna, steam room and fitness centre.



# RUAPEHU

The Ruapehu region takes its name from the sacred Mt Ruapehu. At 2797m, Mt Ruapehu is the highest mountain in the North Island of New Zealand. Mt Ruapehu's eight named glaciers are the island's only glaciers and the sacred Crater Lake, on top of the mountain, is one of only three in the world surrounded by snow.



## Tongariro Alpine Crossing

Its UNESCO dual World Heritage Area status recognises Tongariro National Park's important Maori cultural and spiritual associations as well as its outstanding volcanic features. Visitors can hike the Tongariro Alpine Crossing, the many other fantastic walks in the area or visit Mt Doom and other Lord of the Rings locations.



## Château Tongariro

In the middle of the Tongariro National Park sits the Chateau Tongariro Hotel. Built in 1929, the 4-star luxury hotel, is minutes away from the snow and Whakapapa Ski Area. Chateau Tongariro's facilities include saunas, indoor heated pool, gymnasium, tennis courts and 9-hole golf course.



## Mt Ruapehu Skiing and Snowboarding

Mt Ruapehu is home to New Zealand's largest ski areas, Turoa and Whakapapa. Whakapapa is known for its outstanding beginner area, Happy Valley. On the southwestern slopes, Turoa offers the most awesome natural skiing and snowboarding terrain New Zealand has available.



Hawke's Bay is the perfect year-round holiday destination, with a Mediterranean climate of long hot summers and mild sunny winters. The region boasts an outstanding natural environment and some of New Zealand's best fresh seasonal food and award winning wine. Complemented by fabulous fresh local produce which has earned Hawke's Bay a reputation as having some of New Zealand's leading restaurants and cafés.



### Art Deco Trust Walks & Tours

Napier's Art Deco Walks and Tours are operated by the Art Deco Trust which was formed to preserve, enhance and promote the unique 1930's architecture of the city. Daily guided walks depart from the Napier Visitor Centre at 10am, the Art Deco Shop at 2pm; with evening walks over summer months. Private group walks are available on request.



### The Farm at Cape Kidnappers

Set on a 6000 acre sheep and cattle station offering panoramic views of Hawke's Bay; this property offers 22 guest suites and a four bedroom Owner's Cottage. Cape Kidnappers' links style golf course has been ranked the 38th best golf course in the world. The Lodge offers gourmet dining, full service spa, infinity pool, and a variety of activities.



### Mission Estate Winery

Established in 1851, New Zealand's oldest winery has an elegantly restored seminary offering the full winery experience; visitors can sample the extensive range of award winning wines or take a tour of the historic complex. Beautiful by day and spectacular by night, the fine-dining Mission Restaurant has a reputation as one of New Zealand's best.



# TE PUIA

Te Puia spans 70 hectares within the historic Te Whakarewarewa Valley, on the edge of Rotorua. We are home to the world famous Pohutu geyser, to mud pools, hot springs, to silica formations, to the Kiwi bird and the national schools of wood carving, weaving, stone and bone carving. We have shared these treasures with manuhiri (visitors) for 170 years and proudly continue that legacy today.



## Te Pō

Te Pō is an evening experience of traditions, rituals and lifestyle of the Maori shared within Rotowhio Marae, culminating in a sumptuous feast including a delicious traditional hangi, fresh seafood and the best of New Zealand cuisine.



## Ingo

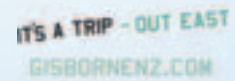
New Zealand green-shelled mussels and prawns are poached in one of our natural hot geothermal pools, Ngararatuatara set deep in the heart of the geothermal valley and is accompanied by New Zealand beer, juice and sparkling wines.



## Steambox

After selecting their lunch ingredients, guests learn to weave a flax flower with their guide, before heading off on a highly personalised guided tour of Te Whakarewarewa Thermal Valley, the schools of carving and weaving and the Kiwihouse. The tour ends with guests seeing their lunch lifted nga wha (steam vent) and followed by a picnic lunch on the geyser terrace.

## LOVE NORTH PARTNERS



## Explore Central North Island

[Pacific Coast Highway](#) / [Thermal Explorer Highway](#) / [Volcanic Loop](#)